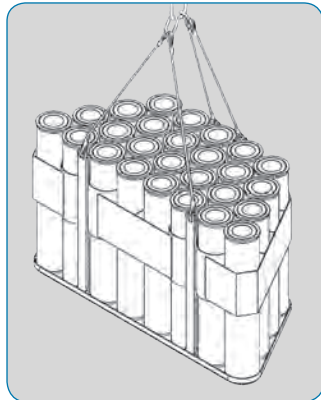


High Activity Filter Dispositioning

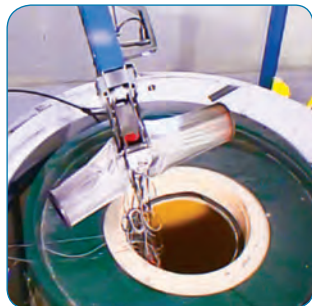
EnergySolutions and WMG have joined forces to create FilterSolutions™, a complete service combining industry-leading characterization expertise, packaging efficiency (FLTRSTOR™ System), e-Shipper™, cask transportation, high activity filter processing, and disposal capabilities.



FLTRSTOR™ System



Open-top container



Removing filters from container



Filters in shredder

WMG's FLTRSTOR™ System™ is made up of filter racks and an integrated open-top container, optimizing the number of filters that can be loaded in each shipment, while reducing worker dose by limiting the number of lifting evolutions required to load the filters. EnergySolutions' robust transportation and cask fleet further streamlines the process.

RADMAN™ data transfer authorization provides a seamless transition for shipping, processing, and/or disposal, allowing FilterSolutions to: (1) access legacy filter data, (2) re-characterize filters pre- and post-processing, (3) assist in creating the most efficient packaging plan, and (4) provide all shipping paperwork through WMG's **e-SHIPPER** service.

The FilterSolutions™ processing facility at EnergySolutions' Bear Creek Operations in Tennessee is able to perform remote, sophisticated, and ALARA sorting, segregation, volume reduction, and/or encapsulation of filters. In addition to the processing of filters these services can be extended to soil, sludge, and legacy "problem liners."

The final wasteform is sent to EnergySolutions' Clive facility in Utah for permanent disposal as Class A waste.

Call your EnergySolutions representative or visit our website for additional information on how this innovative, turnkey service can help reduce your filter management costs.

www.energysolutions.com/waste-processing/high-activity-filter-processing



Remote operations for filter removal from container and placement in shredder

FILTERSOLUTIONS™



ENERGYSOLUTIONS



PROCESSING at EnergySolutions' Bear Creek Operations in Tennessee



TRANSPORTATION via EnergySolutions' subsidiary Hittman Transport Services



DISPOSAL at EnergySolutions disposal facility in Clive, Utah

Bear Creek Operations provides the safe processing and packaging of radioactive material for permanent disposal. In addition to filter processing, Bear Creek's capabilities include volume reduction through compaction and incineration, resin dewatering, solidification, and evaporation processes.

The facility operates under regulatory authority of the state of Tennessee Department of Environment and Conservation (TDEC) Division of Radiological Health (DRH) in agreement with the U.S. Nuclear Regulatory Commission (NRC), and is ANI insured.

EnergySolutions' subsidiary, Hittman Transport Services, is the premier transporter of low-level radioactive waste in the country, and one of the largest trucking companies for hauling nuclear fuel in the United States. Its fleet logs millions of miles per year, transporting shipping casks, vans, and flatbeds throughout the United States and Canada.

The Clive disposal facility is located in the West Desert of Utah approximately 75 miles west of Salt Lake City. With nearly 30 years of operational experience, the Clive disposal facility plays a vital role in the nuclear industry as a safe and compliant option for permanent disposal of radioactive waste.